



Coral Avenue, Bridgwater
£299,950



- Semi-detached townhouse!
- Four double bedrooms!
- Spacious design!
- Kitchen / diner & living room!
- Ensuite, bathroom, shower room & WC!
- Enclosed rear garden!
- Garage & double drive!
- NHBC guarantee remaining!
- Double glazing!
- Gas central heating!

Hall

WC

Kitchen / Diner
5.31m x 3.91m

Stairs & Landing

Living Room
5.31m x 3.48m

Family Bathroom
3.09m x 1.60m

Bedroom 2
3.11m x 3.35m

Stair & Landing

Bedroom 1
3.28m x 3.91m (max)

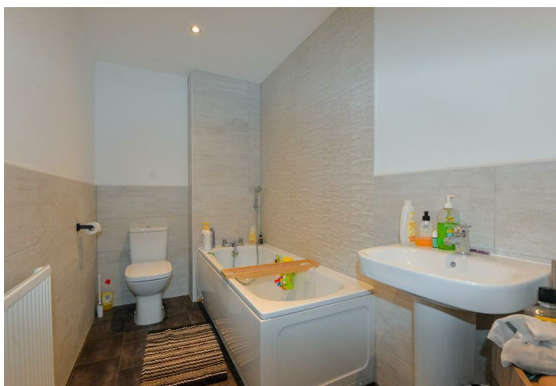
En-Suite

Bedroom 3
2.97m x 3.45m (max)

Bedroom 4
2.76m x 3.45m

Family Shower Room

Garage
6.03m x 3.04m





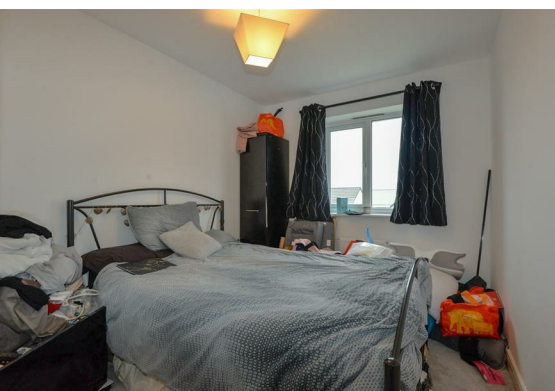
Presenting this modern, four bedroom, semi-terrace townhouse, set on the North of Bridgwater within the popular Kings Down development.

Briefly, the property comprises an entrance hall with ample storage and WC. A spacious kitchen/diner with vast worktop & unit space, some integrated appliances, French doors to the rear garden and giving a great entertaining space.



The first floor hosts an open landing. A well proportioned living room with dual windows overlooking the rear garden. A modern family bathroom with toilet, basin and bath with shower over. The second bedroom, a good size double room overlooking the front.

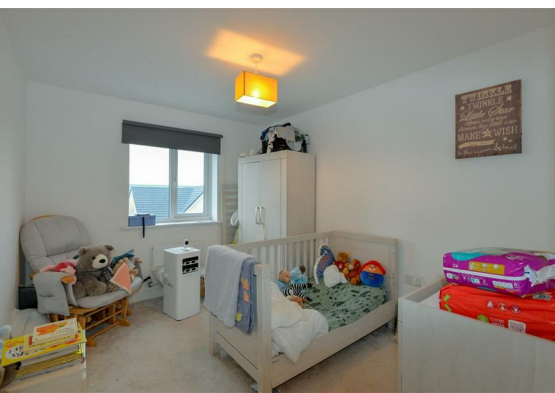
The second/top floor hosts a landing with airing cupboard. The master bedroom, a good sized double, with en-suite shower room comprising toilet, basin and shower. A third and fourth bedroom, both well proportioned double bedrooms, overlooking the rear garden. And a shower room with shower, toilet & basin.



The rear garden boasts patio, decking with pergola and a lawn which is enclosed. The rear garden also benefits from side access. The front of the property hosts a driveway for two vehicles and gives access to the single garage – which has power and light.

The property benefits from double glazing throughout and gas central heating.

Coral Avenue found on the edge of "Kings Down", is situated near a local convenience store, primary school, and park. A secondary school, college and much more is within easy walking distance also. Kings Down boasts excellent transport links with the M5 being only a few minutes away, linking you to Bristol, Exeter and beyond.



Tenure: Freehold
EPC: C
Council Tax Band: C

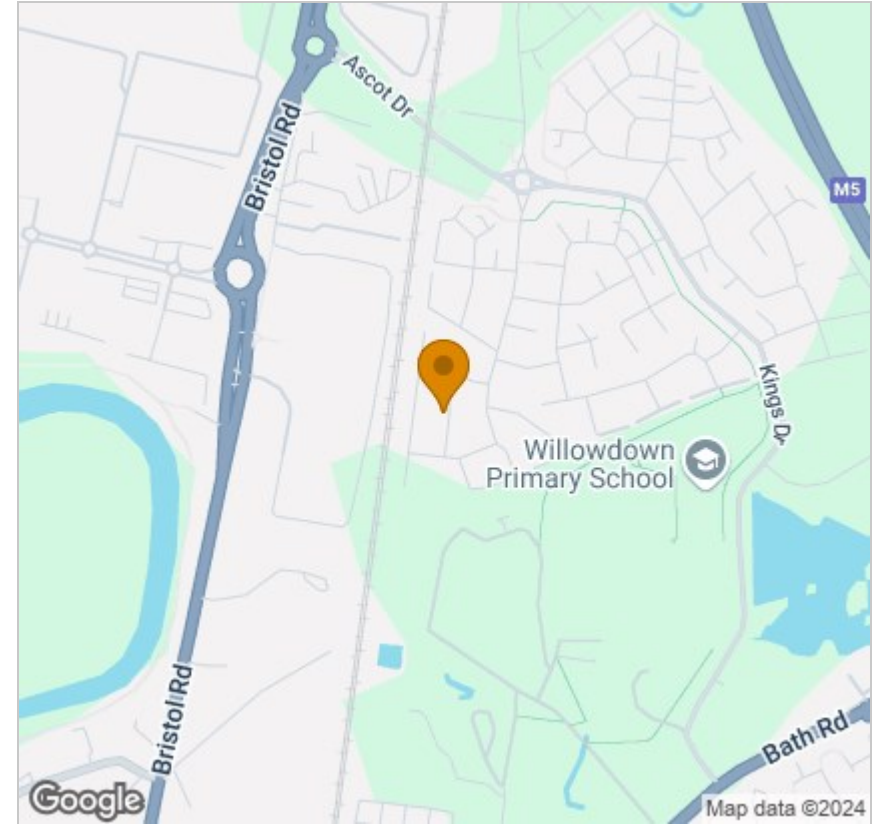
Floor Plan



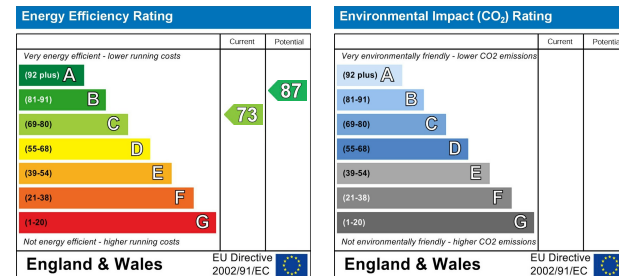
Viewing

Please contact our Sales Office on 01278 554333 if you wish to arrange a viewing appointment for this property or require further information.

Area Map



Energy Efficiency Graph



These particulars, whilst believed to be accurate are set out as a general outline only for guidance and do not constitute any part of an offer or contract. Intending purchasers should not rely on them as statements of representation of fact, but must satisfy themselves by inspection or otherwise as to their accuracy. No person in this firm's employment has the authority to make or give any representation or warranty in respect of the property.

Suite 1A, Wellworths Business Centre Parrett Way, Bridgwater, Somerset, TA6 5LB
 Tel: 01278 554333 Email: corbett@sykesmoore.co.uk <http://www.sykesmoore.co.uk/>