



SYKES-MOORE
estate agents



LOADING VEHICLES
ONLY NO PARKING



- First floor apartment!
- Two double bedrooms!
- Open plan living/kitchen/diner!
- Family bathroom!
- Ample storage!
- Modern decor!
- Larger sized apartment in the block!
- Allocated parking!
- Gas central heating!
- Double glazing!

Hall

Living / Kitchen / Diner
4.69m (max) x 6.55m

Bedroom 1

3.08m x 4.48m

Bedroom 2

3.22m x 3.23m

Family Bathroom

2.07m x 1.70m





Presenting this modern, two double bedroom, first floor apartment, situated in the heart of Stockmoor.

The property is a larger design than other apartments in the block. Briefly, the apartment comprises a generously sized hall with two storage cupboards and a boiler cupboard. A spacious, light and open plan living/kitchen/diner with Juliet balcony, large window, second window and generous space for living, dining & entertaining. The kitchen hosts ample worktop & unit space, sink, some appliances and space for other appliances.

The master bedroom is a good sized double bedroom with built in storage benefitting from sliding mirrored doors. The second bedroom is another good sized double bedroom also. The family bathroom hosts a bath with shower over, toilet, basin, tiled floor and towel radiator.

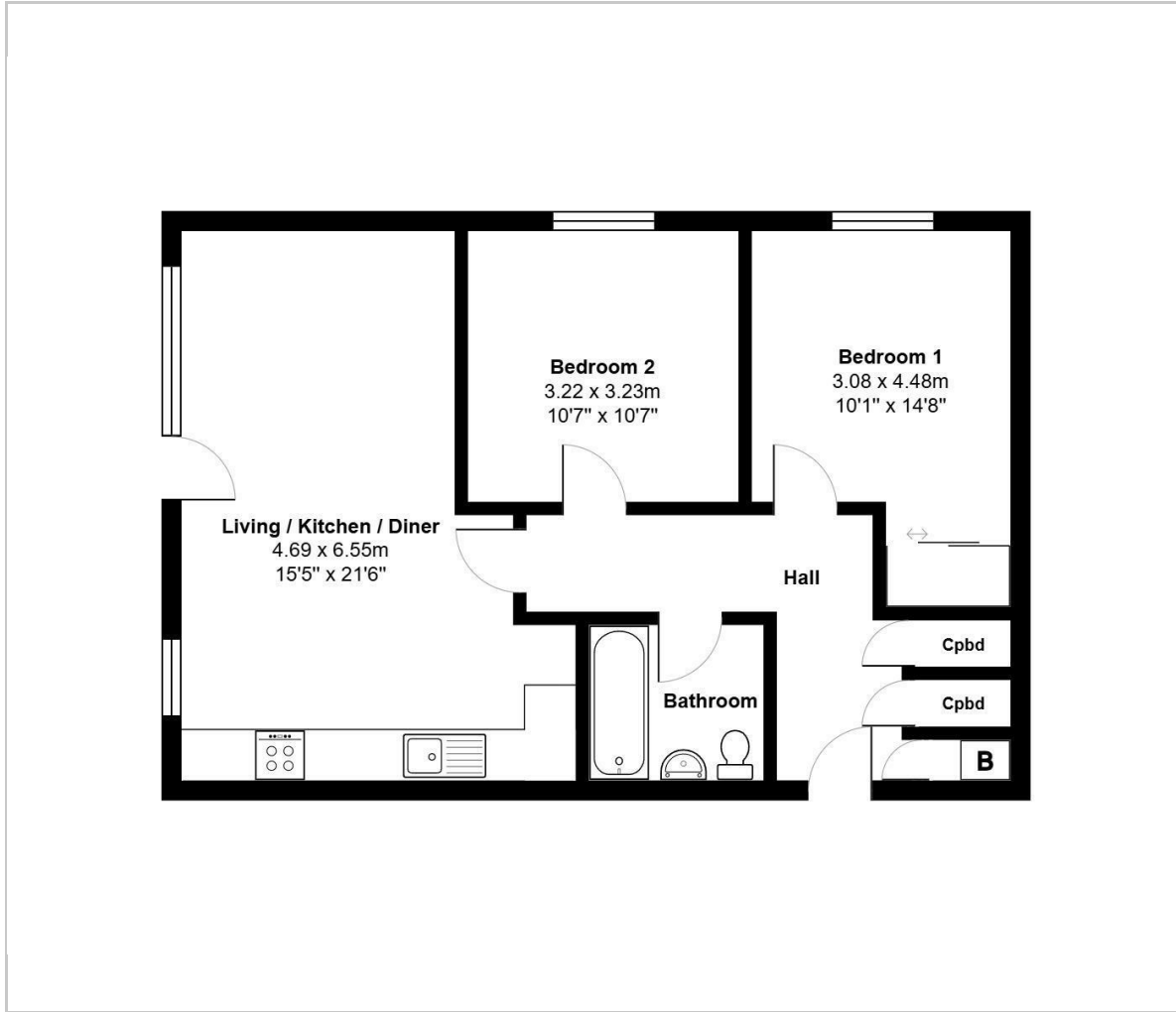
The property benefits from gas central heating and double glazed windows throughout. There is one allocated parking space with the apartment.

Stockmoor, found on the Taunton side of Bridgwater, is a short drive away from Bridgwater town centre and an even shorter drive away from the M5 which links to Bristol, Exeter and beyond. Stockmoor itself hosts a primary school, convenience store, pharmacy, charity shop, café, takeaways and other amenities.

Tenure: Leasehold. 89 years remaining. 99 years long from 2014.
Most recent ground rent: £299 per annum.
Most recent service charge: £2380 per annum.

EPC: TBC
Council tax band: A

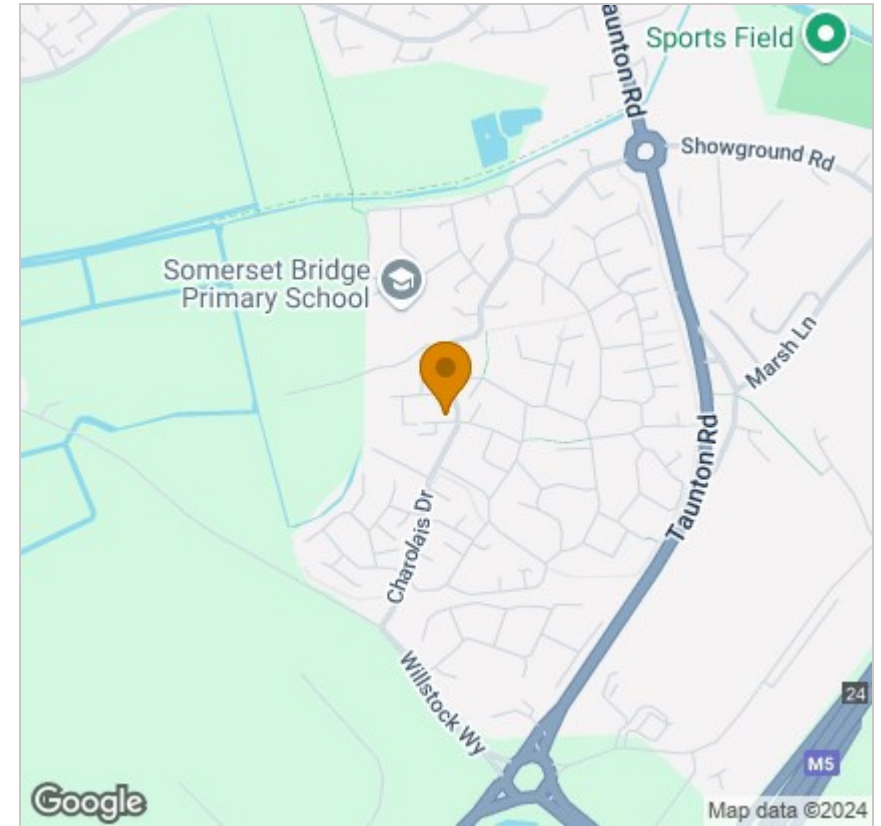
Floor Plan



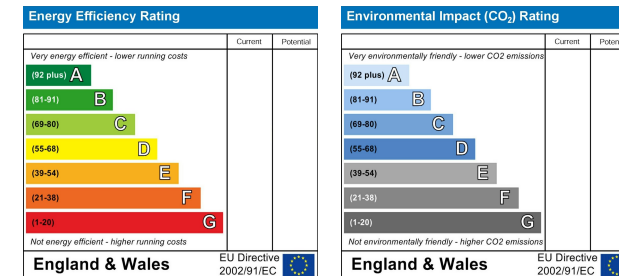
Viewing

Please contact our Sales Office on 01278 554333 if you wish to arrange a viewing appointment for this property or require further information.

Area Map



Energy Efficiency Graph



These particulars, whilst believed to be accurate are set out as a general outline only for guidance and do not constitute any part of an offer or contract. Intending purchasers should not rely on them as statements of representation of fact, but must satisfy themselves by inspection or otherwise as to their accuracy. No person in this firm's employment has the authority to make or give any representation or warranty in respect of the property.

Suite 1A, Wellworths Business Centre Parrett Way, Bridgwater, Somerset, TA6 5LB
Tel: 01278 554333 Email: corbett@sykesmoore.co.uk <http://www.sykesmoore.co.uk/>