



Tower Hill, Stogursey
£245,000



- Semi-detached family house!
- Three double bedrooms!
- Three reception rooms!
- Sold with no onward chain!
- Generous rear garden!
- Four piece family bathroom!
- Popular village location!
- Set over three floors!
- Oil central heating & multi-fuel-burner!
- Double glazing!

Porch

Hall

Living Room

4.47m x 3.57m

Kitchen / Diner

5.52m x 3.02m

Conservatory

2.71m x 4.42m

Stairs & Landing

Bedroom 2

3.05m x 3.57m

Bedroom 3

3.12m x 3.02m

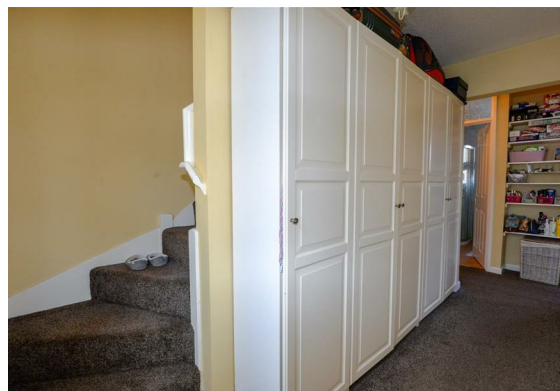
Family Bathroom

2.26m x 1.98m

Stairs

Bedroom 1

4.90m (max) x 42.6 (max)





Presenting this three bedroom, semi-detached family home, set in a tucked away position!

The ground floor of the property comprises a porch and inner hall. A generously sized living room with dual aspect windows and multi-fuel-burner. A spacious kitchen/diner boasting ample unit & worktop space, electric hob, double oven, space for further appliances, under-stairs storage, triple windows, French doors to the conservatory and a great space for dining & entertaining. A well-proportioned conservatory with power, light and French doors leading onto the rear garden.



Stairs lead up to the landing hosting vast storage cupboards. The second bedroom is a good sized double with dual aspect windows and built in storage/airing cupboard. The third bedroom also can host a double bedroom and benefits from dual aspect windows. A modern, four piece, family bathroom with shower, bath, basin, toilet & towel radiator.

Stairs lead up to the top floor which hosts the secluded master bedroom; a spacious double bedroom with dual skylight windows.

Outside you'll find an enclosed rear garden comprising gravel, decking, astro-turf and shed - giving a good outside space. There is an additional section of garden, mainly gravel also. There is side access into the rear garden via a gate. To the front of the property is a small, raised, gravel bed and a path to the front door.

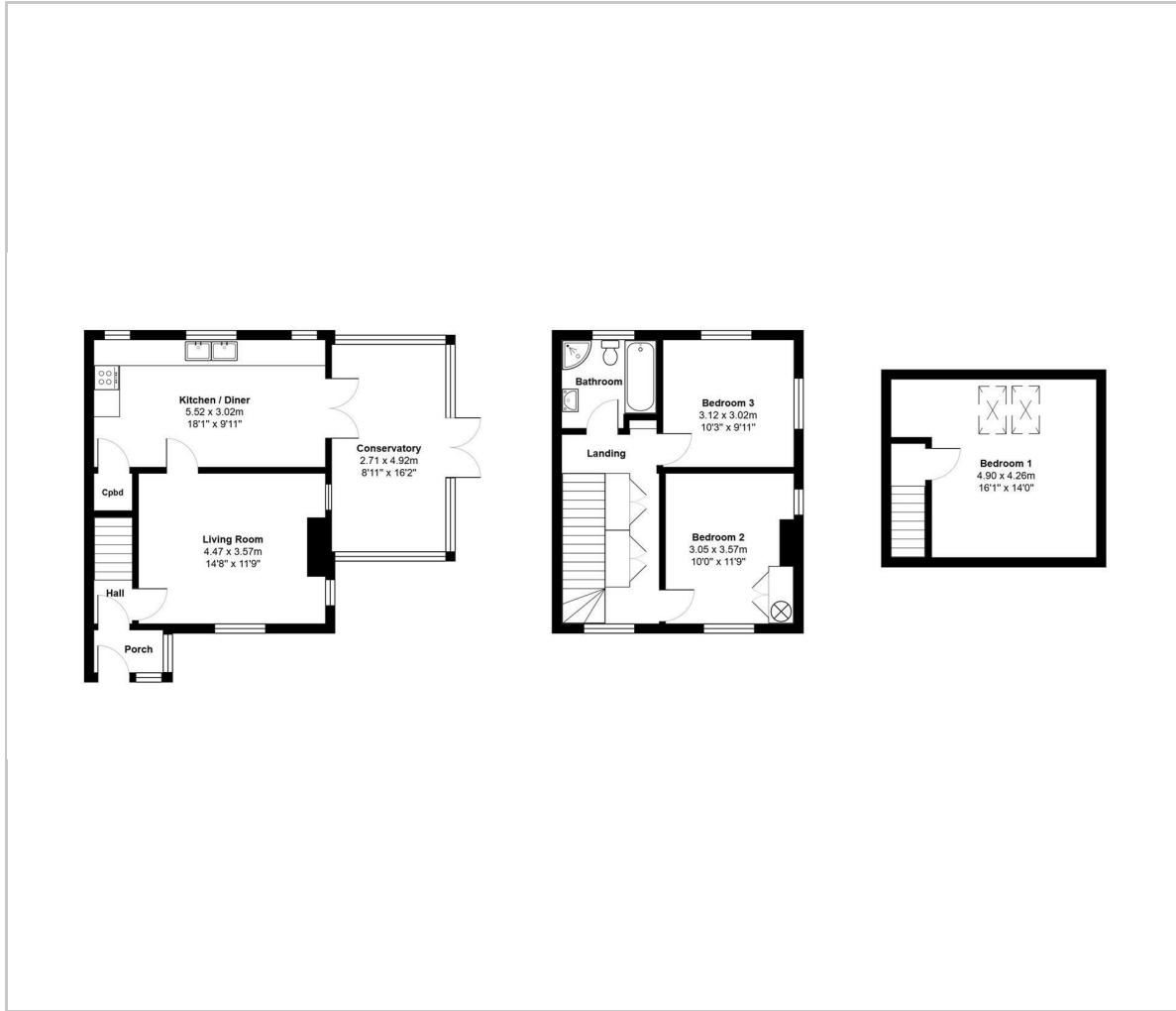
The property benefits from oil central heating, multi-fuel-burner and double glazed windows throughout.

Tower Hill is found in Stogursey and the property is only a short walk away from shop, pubs, school, church & rural walks. Stogursey itself is only a few minutes drive from Bridgwater and the M5 which links to Exeter, Bristol & beyond.

Tenure: Freehold
EPC: E
Council tax band: B



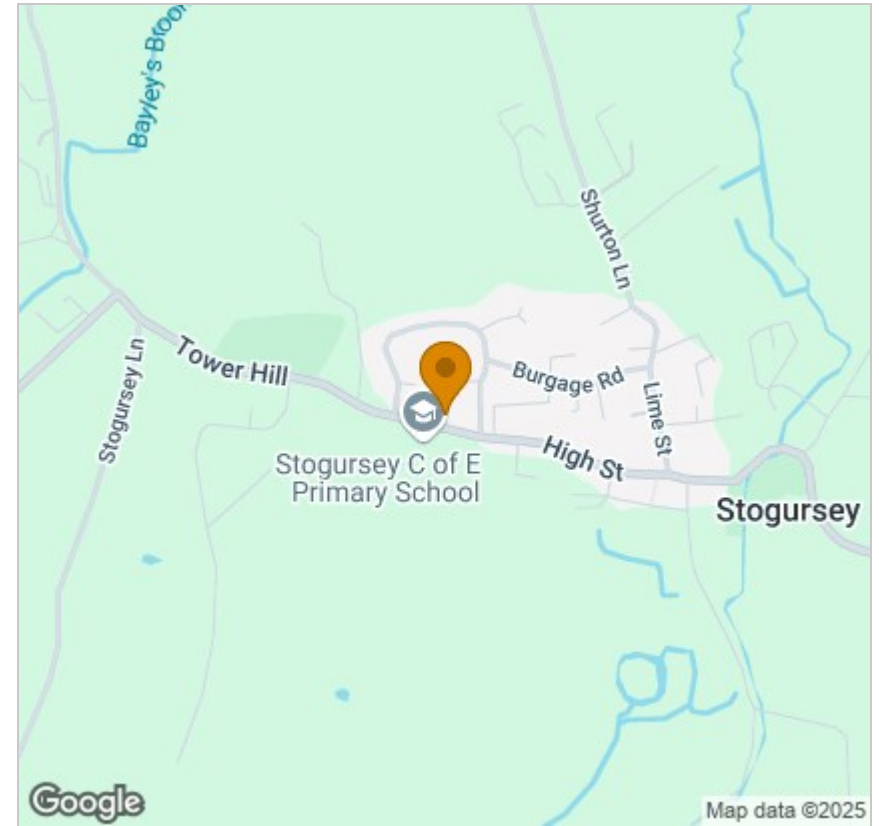
Floor Plan



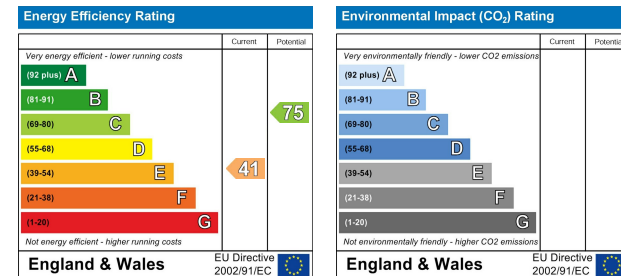
Viewing

Please contact our Lettings Office on 01278 554333 if you wish to arrange a viewing appointment for this property or require further information.

Area Map



Energy Efficiency Graph



These particulars, whilst believed to be accurate are set out as a general outline only for guidance and do not constitute any part of an offer or contract. Intending purchasers should not rely on them as statements of representation of fact, but must satisfy themselves by inspection or otherwise as to their accuracy. No person in this firm's employment has the authority to make or give any representation or warranty in respect of the property.

Suite 1A, Wellworths Business Centre Parrett Way, Bridgwater, Somerset, TA6 5LB
 Tel: 01278 554333 Email: corbett@sykesmoore.co.uk <http://www.sykesmoore.co.uk/>