



Oak Apple Drive, Bridgwater  
£465,000



- Modern, refurbished, detached, family home!
- Well presented & high spec finish throughout!
- Four bedrooms!
- Three reception rooms!
- Popular location!
- Modernised, low maintenance garden!
- Ensuite, bathroom & WC!
- Double garage & gated drive!
- Gas central heating!
- Double glazing!

#### Hall

#### Living Room

3.71m x 6.09m

#### Snug

3.44m x 3.33m

#### Kitchen

4.19m x 2.58m

#### Dining Room

3.91m x 3.37m

#### Utility

1.53m x 2.59m

#### WC

1.39m x 1.07m

#### Stairs & Landing

#### Bedroom 1

3.50m x 3.43m

#### Walk-In-Wardrobe

#### En-Suite

2.20m x 1.69m

#### Bedroom 2

3.78m (max) x 3.39m (max)

#### Bedroom 3

2.81m x 2.61m

#### Bedroom 4

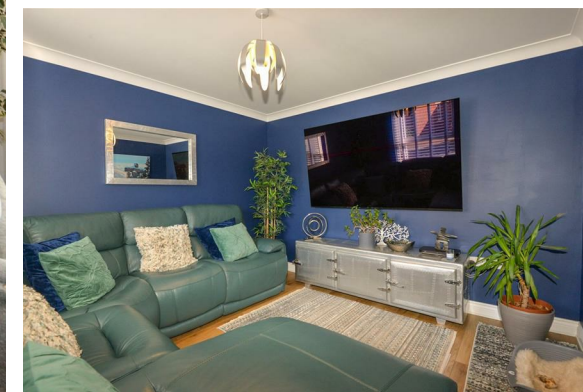
2.66m x 2.22m

#### Bathroom

2.45m x 1.67m

#### Double Garage

5.53m x 5.53m





Presenting this spacious, detached family home set in a fantastic position and refurbished to a high standard throughout!

The property comprises an hall with WC. A spacious living room with triple aspect windows, patio doors onto the rear garden and feature chimney breast with fire. A well proportioned snug overlooking the front of the property. A modern, high spec, kitchen with ample quartz worktop & unit space, integrated appliances, built in sink & drainer, spotlights, breakfast bar, under-stairs storage and the kitchen opens up into the dining room with insulated roof, French doors onto the rear garden and generous space for entertaining. A utility room with worktop, storage, sink and space/plumbing for appliances.

Stairs lead to a spacious landing with airing cupboard. The master bedroom is a generously sized double bedroom with walk-in-wardrobe and modern, high spec, en-suite comprising large shower, toilet, basin and storage. The second bedroom is a spacious double bedroom overlooking the front. The third bedroom is a well proportioned double bedroom with lots of built in storage. The fourth bedroom, currently used as a study, overlooks the front. The modern family bathroom hosts a P-shaped bath with rainfall shower over, basin, toilet and storage.

Outside, the property hosts a modernised, low maintenance garden, wrapping around the dining room. The rear garden comprises a patio with borders with mature plants. There is an electric gated driveway leading to the double garage which boasts electric door, power & light.

The property benefits from gas central heating & double glazing throughout.

The property is only a short walk away from a primary school, park & village hall. Oak Apple Drive is a short drive away from the town centre and the M5 which links to Bristol, Exeter and beyond.

Tenure: Freehold  
EPC: C  
Council tax band: E

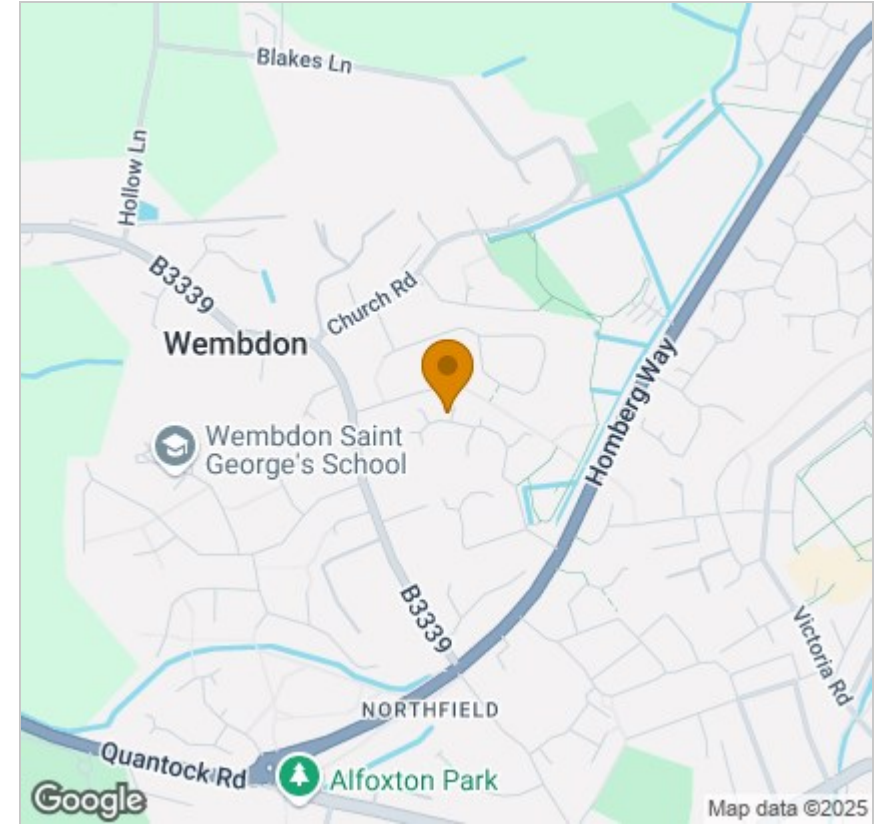
## Floor Plan



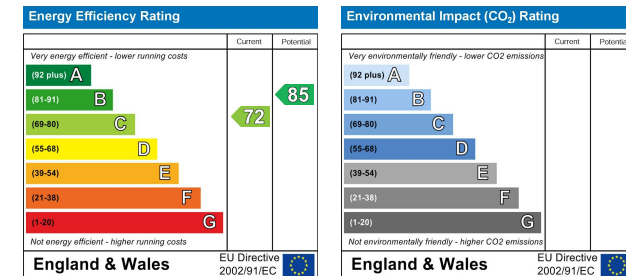
## Viewing

Please contact our Sales Office on 01278 554333 if you wish to arrange a viewing appointment for this property or require further information.

## Area Map



## Energy Efficiency Graph



These particulars, whilst believed to be accurate are set out as a general outline only for guidance and do not constitute any part of an offer or contract. Intending purchasers should not rely on them as statements of representation of fact, but must satisfy themselves by inspection or otherwise as to their accuracy. No person in this firm's employment has the authority to make or give any representation or warranty in respect of the property.

Suite 1A, Wellworths Business Centre Parrett Way, Bridgwater, Somerset, TA6 5LB  
Tel: 01278 554333 Email: corbett@sykesmoore.co.uk <http://www.sykesmoore.co.uk/>